

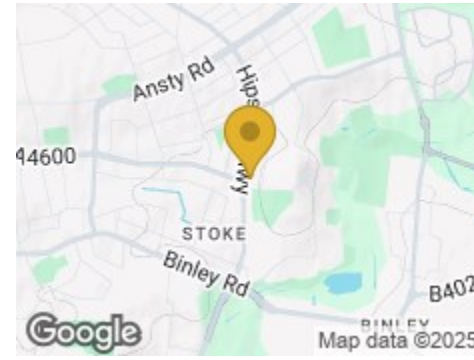
Road Map



Hybrid Map



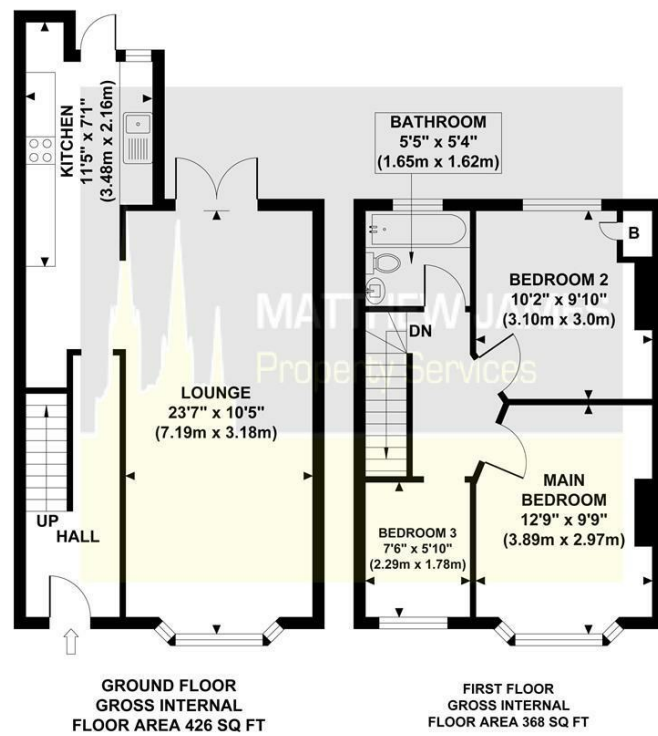
Terrain Map



MATTHEW JAMES
Property Services

Floor Plan

HIPSWELL HIGHWAY
Approximate Gross Internal Area 794 sq ft / 73.8 sq m

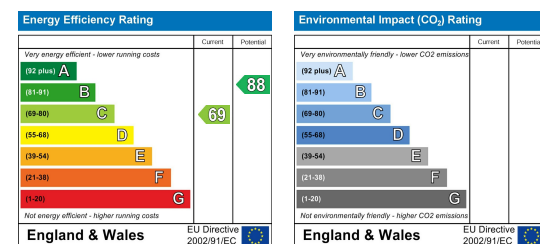


Although every attempt has been made to ensure accuracy, all measurements are approximate and no responsibility is taken for any error, omission, or mid-statement. This floor plan is for illustrative purposes only and not to scale. Measured in accordance to RICS standards.

Viewing

Please contact us on 02477 170170 if you wish to arrange a viewing appointment for this property or require further information.

Energy Efficiency Graph



These particulars, whilst believed to be accurate are set out as a general outline only for guidance and do not constitute any part of an offer or contract. Intending purchasers should not rely on them as statements of representation of fact, but must satisfy themselves by inspection or otherwise as to their accuracy. No person in this firm's employment has the authority to make or give any representation or warranty in respect of the property.

CONTACT INFORMATION

24a Warwick Row, Coventry CV1 1EY

02477 170170

info@matthewjames.uk.com

www.matthewjames.uk.com

Facebook

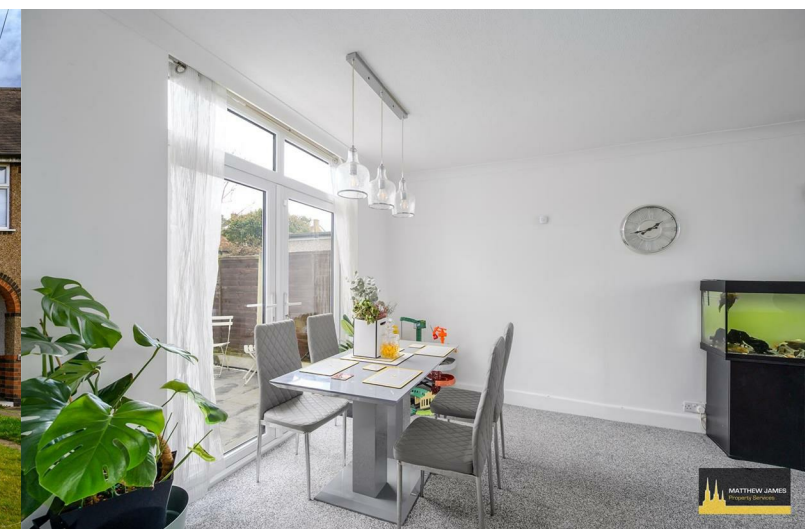
Twitter



215 Hipswell Highway

Wyken, Coventry CV2 5FN

£240,000



215 Hipswell Highway

Wyken, Coventry CV2 5FN

£240,000



Front Garden

Entrance Hallway

Open Plan Kitchen

11'5 x 7'1

Lounge Dining Room

23'7 x 10'5

First Floor Landing

Master Bedroom

12'9 x 9'9

Bedroom Two

10'2 x 9'10

Bedroom Three

7'6 x 5'10

Family Bathroom

5'5 x 5'4

Rear Garden

Garage / Games Room / Bar

15'8 x 9'4

